



# International Journal of Management Research and Economics

Publisher's Home Page: <https://www.svedbergopen.com/>



Research Paper

Open Access

## The Imperative Need for Tax Reform in China and Its Impact on Advancing Social Civilization

Bing Chen<sup>1\*</sup>

<sup>1</sup>CPA, CMA, Shanghai Maritime University, Shanghai, China. E-mail: Sharage@gmail.com

### Article Info

Volume 5, Issue 1, January 2025

Received : 11 December 2024

Accepted : 09 January 2025

Published : 25 January 2025

doi: [10.51483/IJMRE.5.1.2025.32-38](https://doi.org/10.51483/IJMRE.5.1.2025.32-38)

### Abstract

This paper delves into the distinctions between China's and the United States' tax systems, underscoring the pressing requirement for tax reform in China. It scrutinizes the potential of these reforms to propel the evolution of social civilization, emphasizing equity, efficiency, and the digital metamorphosis of tax governance.

**Keywords:** Tax system, Tax reform, Social civilization, Digital taxation, Equitable, Social equity, AI, AGI, ASI, UBI

© 2025 Bing Chen. This is an open access article under the CC BY license (<https://creativecommons.org/licenses/by/4.0/>), which permits unrestricted use, distribution, and reproduction in any medium, provided you give appropriate credit to the original author(s) and the source, provide a link to the Creative Commons license, and indicate if changes were made.

## 1. Introduction

The tax systems of China and the United States are divergent, mirroring their economic frameworks and policy priorities. The US tax system prioritizes direct taxes, focusing on individual taxation and income redistribution. Conversely, China's system, with its emphasis on indirect taxes, is predominantly geared towards fiscal revenue collection from businesses. This comparative analysis unveils the imperative for China's tax system to adapt in accordance with global benchmarks and the burgeoning digital economy, and imagines the future of taxation in the coming eras.

## 2. Comparative Analysis of Tax Systems

### 2.1. Individual Taxation

#### 2.1.1. US Individual Income Tax System

The U.S. Individual Income Tax system is comprehensive, featuring a progressive tax rate structure that includes all sources of income. This system is designed to address income inequality effectively, which is a key aspect of the advancement of social civilization. The U.S. tax brackets for individual income in 2024 range from 10% to 37%, providing a broad base for taxation with a progressive nature that ensures those with higher incomes contribute more significantly to the tax revenue (Tax Foundation, 2021).

#### 2.1.2. China's Individual Income Tax System

China employs a classified income tax system with varying rates for different income streams. China's Individual Income Tax is structured with seven progressive tax brackets, ranging from 3% to 45%. This system is characterized by a segmented approach to taxation, with different rates applied to various types of income such as wages, business

\* Corresponding author: Bing Chen, CPA, CMA, Shanghai Maritime University, Shanghai, China. E-mail: Sharage@gmail.com

income, and investment returns. The personal allowance, known as the personal income tax exemption threshold, is set at 5000 RMB, which is lower than the U.S. standard deduction that varies based on filing status and income level (NPC, 2024).

### *2.1.3. Comparison and Analysis*

The U.S. system's broader coverage and progressive nature more effectively address income inequality, a pivotal element in the advancement of social civilization. In contrast, China's classified system may result in a less equitable distribution of the tax burden across different income sources. The U.S. allows for various deductions that can reduce the taxable income, such as for dependents and education expenses, while China has fewer deductions, which can place a heavier burden on taxpayers.

## **3. Tax Structure for Individual Taxation**

### **3.1. US Tax Structure**

The U.S. heavily relies on direct taxes, with individual income taxes and social security taxes constituting the primary sources, accounting for 72.6% of total taxes. This approach emphasizes personal responsibility and income redistribution, aligning with the country's focus on individual taxation and social welfare contributions. The U.S. tax system is characterized by a wide tax base and a progressive rate structure, which is effective in reducing income inequality and promoting social equity.

### **3.2. China's Tax Structure**

China's tax structure is dominated by indirect taxes, such as VAT, which accounted for 36.8% of total tax revenue in 2020, reflecting a business-centric approach. This structure places a significant tax burden on businesses and consumers, rather than individual income earners directly. China's tax system is primarily focused on indirect taxes, which are less progressive and can have a regressive effect on lower-income individuals.

### **3.3. Comparison and Analysis**

The reliance on direct taxes in the U.S. indicates a stronger focus on income redistribution and social welfare, while China's indirect tax dominance reflects a fiscal strategy that prioritizes revenue collection from business transactions over individual income. This difference has significant implications for economic behavior and policy effectiveness in both countries. The U.S. system's emphasis on direct taxes contributes to a more equitable distribution of the tax burden, while China's indirect tax focus may lead to a heavier burden on businesses and consumers (Tencent News, 2023).

## **4. Comparison of Corporate Tax Systems**

### **4.1. Tax Jurisdiction and Scope**

The U.S. corporate tax system applies to both domestic and foreign companies with income sourced in the United States, following a global income principle. In contrast, China's corporate tax system adheres to a residence-based principle, taxing income derived within its borders.

### **4.2. Tax Calculation Methods and Rate Comparison**

The United States operates a progressive corporate tax system, with federal rates ranging from 10% to 37%, depending on the level of income. This is contrasted by China's more uniform approach, which applies a flat corporate tax rate of 25%. However, both systems offer incentives that can reduce these rates. In China, certain regions and industries receive preferential rates, which can range from 2.5% to 15%. High-tech enterprises and qualified technology-advanced service enterprises in China, for example, enjoy a reduced rate of 15%, while small and low-profit enterprises may be subject to as low as 2.5%. The U.S. federal corporate tax rate is 21%, but this is complemented by additional corporate taxes at the state level, with 44 states and the District of Columbia imposing their own corporate income taxes. When averaged across states, the combined U.S. corporate tax rate reaches 25.8% (York *et al.*, 2022).

The US system also allows for foreign tax credits to mitigate the impact of double taxation on multinational corporations, a provision that China does not equivalently offer. This can significantly affect the tax burden for companies operating internationally.

### **4.3. Tax Filing and Payment**

U.S. companies file annual tax returns with the IRS, while Chinese companies are subject to monthly or quarterly filings with the State Taxation Administration.

### **4.4. Tax Incentives**

Both countries offer tax incentives to encourage innovation and investment. The U.S. provides R&D tax credits and investment tax credits, while China offers preferential policies for high-tech companies and special economic zones.

### **4.5. Necessity for Deepening Tax Reforms in China**

The necessity for tax reform in China is underscored by the need to stimulate economic growth, encourage innovation, and align with global standards. The AI era presents an opportunity for China to rethink its tax policies to foster a conducive environment for technological advancement.

## **5. Urgency for Tax Reform in China**

### **5.1. Implications for Global Economic Systems**

The disparities in tax systems have profound global economic implications, influencing the development of accounting practices in the era of advanced AI. The divergent approaches to AI integration in socialist and capitalist economies may lead to distinct trajectories in economic development and global wealth distribution (IBFD, 2021)

### **5.2. Tax reform in China**

Tax reform in China is essential for aligning with global economic trends and advancing social civilization. The integration of AI in tax administration presents an opportunity to enhance compliance and efficiency, aligning with the global trend towards digital governance (Rida and El Houssain, 2024). As tax administration leaders convene, there is a collective ambition to harness AI responsibly within tax systems, which is crucial for improving tax compliance behavior and operational efficiency (OECD, 2024)

## **6. Specific Recommendations for Tax Reform**

### **6.1. Transition to Direct Taxes**

The imperative for China to shift its tax system from a heavy reliance on indirect to direct taxes is evident when examining global economic practices. This transition is vital for the nation to more effectively manage income distribution and harmonize with international norms. A stark contrast is presented by the tax revenue composition in 2020, where indirect taxes represented 36.8% of China's total tax income, in contrast to the United States, where direct taxes constituted a dominant 72.6% (PwC, 2013).

The efficacy of direct taxes in mitigating income inequality is well-documented. The OECD's 2024 report underscores the impact of direct taxes in lowering Gini coefficients, a measure of income inequality, by an average of 7 points, which is more than double the 3 points attributed to indirect taxes. This data suggests that direct taxes are particularly potent in fostering a more equitable income distribution (OECD, 2024)

Complementary findings from the Tax Foundation in 2022 reveal that progressive income tax structures can substantially decrease the wealth disparity between the affluent and the less privileged, by as much as 15% (Mengden, 2024). Embracing a direct tax model would enable China to establish a taxation system that is not only fairer but also more reflective of the global fiscal landscape.

In essence, by moving towards a direct tax system, China can enhance the equitable distribution of income, support social justice, and align its tax policies with those of leading economies worldwide. This strategic evolution of the tax structure is crucial for the country's ongoing economic development and its commitment to reducing socio-economic disparities.

### **6.2. Taxation in the Digital Economy**

As digital platforms and services increasingly contribute to China's economy—accounting for 6.2% of GDP in 2022—there is a pressing need to develop a robust framework for taxing digital transactions and services. This approach could create a significant new revenue stream while enhancing fairness in the digital economy. Aligning with the global shift toward Digital Tax Administration 3.0, China should prioritize establishing regulatory frameworks, building capacity, and simplifying compliance processes, particularly for small and medium enterprises (SMEs). Drawing on benchmarks from

the OECD Economic Outlook (2024), such reforms would ensure that digital taxation supports equitable revenue generation and economic sustainability.

### **6.3. Environmental and Resource Taxes**

To foster green development, China should expand environmental and resource taxes, reflecting resource scarcity and encouraging sustainable practices. Carbon taxes and resource taxes are typical tools used with the price control method for energy consumption and greenhouse gas emissions. For instance, China could reduce emissions by 12% annually through optimized environmental taxes (Haisheng *et al.*, 2021).

### **6.4. Property Tax and Local Tax System**

The introduction of a property tax and the development of a robust local tax system can help diversify local government revenue streams and reduce reliance on land sales. This is a significant shift from the current model and can contribute to a more stable and sustainable fiscal system.

### **6.5. Social Security Reforms**

As China's population ages, reforms to the social security system, including the transition of social security fees to taxes, are crucial for ensuring the sustainability of social welfare. These reforms are necessary to address the issue of social security unsustainability and to ensure adequate capital accumulation and welfare (Li and Lin, 2024).

## **7. AI's Impact on Tax Reform**

The advent of AI is poised to revolutionize tax administration and compliance. AI can enhance tax compliance behavior, reduce tax evasion and avoidance, and significantly improve tax compliance and operational efficiency. The integration of AI in tax governance is anticipated to increase tax answers for businesses, assist in filing tax returns, and associate products with specific tax codes for cross-border transactions.

As AI becomes increasingly integral to the global economy, China can consider the following reform measures:

### **7.1. Innovation Incentives**

Introduce or expand tax credits for AI research and development to encourage domestic innovation.

### **7.2. Tax Relief for AI Adoption**

Offer tax reductions for companies that adopt AI technologies to enhance productivity and competitiveness.

### **7.3. Global Cooperation**

Engage in international tax cooperation to prevent double taxation and facilitate cross-border AI investments.

### **7.4. Simplification of Tax Code**

Simplify the tax code to reduce compliance costs and attract foreign investment in the AI sector.

### **7.5. Place-based Incentives**

Learn from the Special Economic Zones model to create AI hubs with tailored tax incentives to attract talent and investment.

## **8. AI's Role in Tax Administration**

The integration of Artificial Intelligence (AI) in tax administration represents a significant advancement in the field, streamlining processes from data collection to fraud detection and compliance checks. Here is an integrated narrative and a comprehensive workflow algorithm that encapsulates the role of AI in tax administration.

### **8.1. Data Collection and Analysis**

AI systems initiate the process by aggregating taxpayer data from digital platforms. This data serves as the foundation for subsequent analysis. AI technologies then automate the collection and analysis of this vast tax-related data, enhancing efficiency and accuracy in data processing (Shalini, 2024).

### **8.2. Real-Time Analysis and Pattern Recognition**

Utilizing machine learning algorithms, AI conducts real-time analysis to identify patterns and anomalies within the data. This analysis is instrumental in flagging potential issues early on.

**8.3. Fraud Detection**

AI systems cross-reference flagged data with third-party information to verify accuracy and detect fraudulent activities. This step is essential for upholding the integrity of the tax system.

**8.4. Risk Assessment and Compliance Checks**

Based on the identified patterns and anomalies, AI assesses tax risks and performs automated compliance checks to ensure adherence to tax laws and regulations.

**8.5. Taxpayer Outreach**

Upon identifying potential discrepancies, the AI system automatically notifies the affected individuals or businesses, informing them of issues that require attention.

**8.6. Automated Resolution and Escalation**

AI resolves minor issues automatically, ensuring a swift and efficient process. For complex cases that necessitate a more nuanced understanding, the system escalates the matter to human auditors for further investigation and resolution (Carpenter and Campel, 2024).

**8.7. Report Generation**

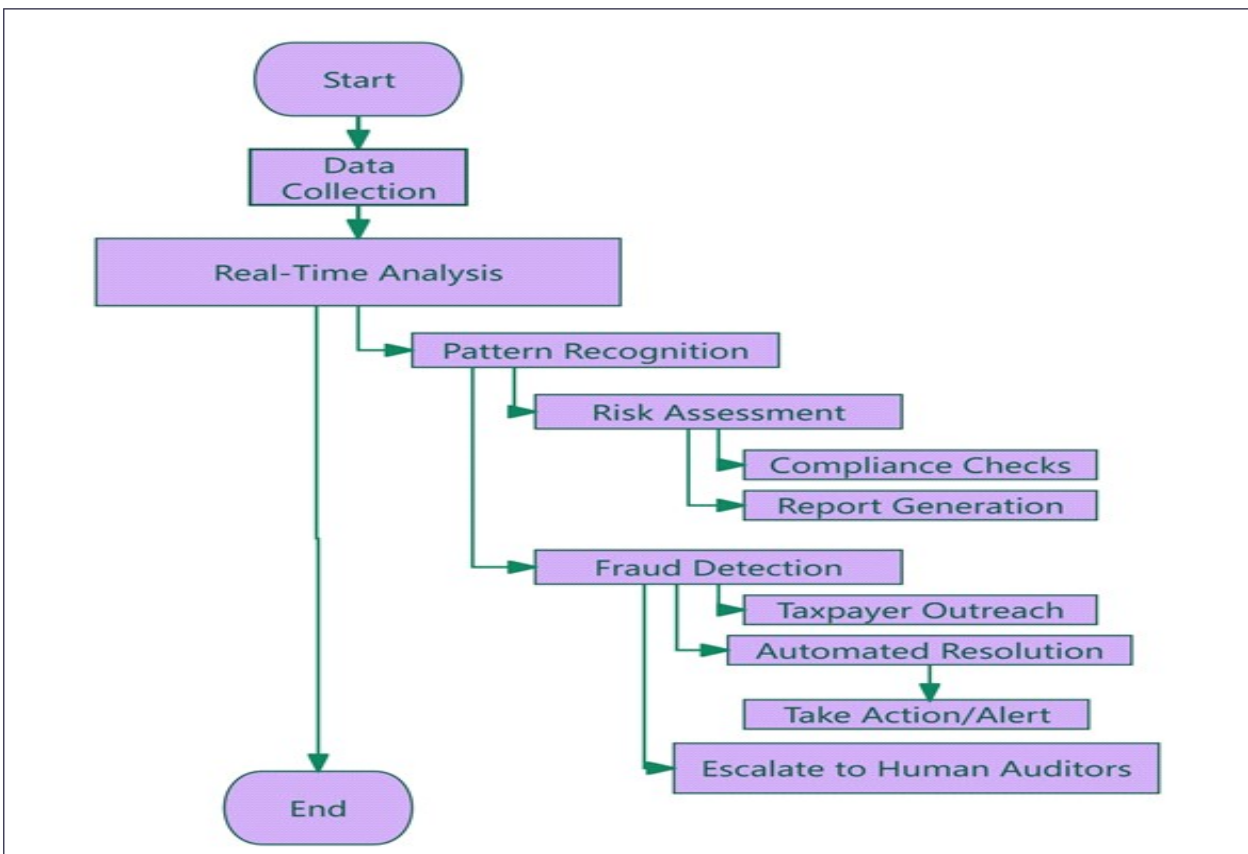
Throughout the process, AI generates tax and compliance reports, providing a clear record of the tax administration activities and outcomes.

**8.8. Continuous Monitoring and Action/Alert**

AI models continuously monitor data to detect potential fraud, and when necessary, take action or issue alerts to relevant parties.

The integrated AI-driven tax compliance workflow can be visualized as follows:

The Figure 1 provides a logical and comprehensive overview of the AI integration in tax administration, from the initial data collection to the final stages of report generation and continuous monitoring. By automating routine tasks



**Figure 1: AI Integration in Tax Administration**

and enhancing compliance checks, AI significantly improves the efficiency of tax management and strengthens the tax system’s ability to detect and prevent fraud.

### 9. Envisioning the Future

As we progress towards the era of Artificial General Intelligence (AGI), Artificial Super Intelligence (ASI), and Universal Basic Income (UBI), the taxation model may undergo a paradigm shift. The advent of AGI could lead to a significant increase in productivity, necessitating a re-evaluation of current tax policies. ASI, with its potential to outperform human capabilities, may prompt a rethinking of how income and wealth are taxed. UBI, aimed at addressing income inequality, could introduce a new layer of taxation to fund its implementation, potentially altering the tax landscape dramatically.

#### 9.1. AGI and Taxation

The development of AGI could significantly boost economic productivity, which in turn would require tax policies to adapt to the new economic realities. For instance, increased automation and intelligentization could lead to a shift in the types of jobs available, necessitating a re-evaluation of how personal income is taxed and potentially leading to a greater focus on wealth taxes or consumption taxes (PwC, 2023).

#### 9.2. ASI and Taxation

ASI has the potential to create vast economic disparities, as those who own and control ASI technologies could amass significant wealth. This would require tax policies to address wealth concentration and ensure that the benefits of ASI are more equitably distributed across society. The emergence of robotics and automation technologies positions them as prospective new tax bases, signifying a pivotal transition in how economic value is generated and captured within the tax system.

#### 9.3. UBI and Taxation

UBI represents a fundamental change in how societies approach social welfare and income distribution. Implementing UBI would likely require new forms of taxation, such as increased taxes on technology profits, wealth, or even a percentage of GDP contributed by automated systems. This could help fund the basic income while also addressing issues of economic inequality.

#### Visualizing the Future Tax Landscape:

The Figure 2 illustrates the evolving tax revenue landscape from 2025 to 2100, highlighting the transition from traditional income tax to novel sources such as robot taxes, wealth taxes, and technology profit taxes. Here’s an analytical breakdown:

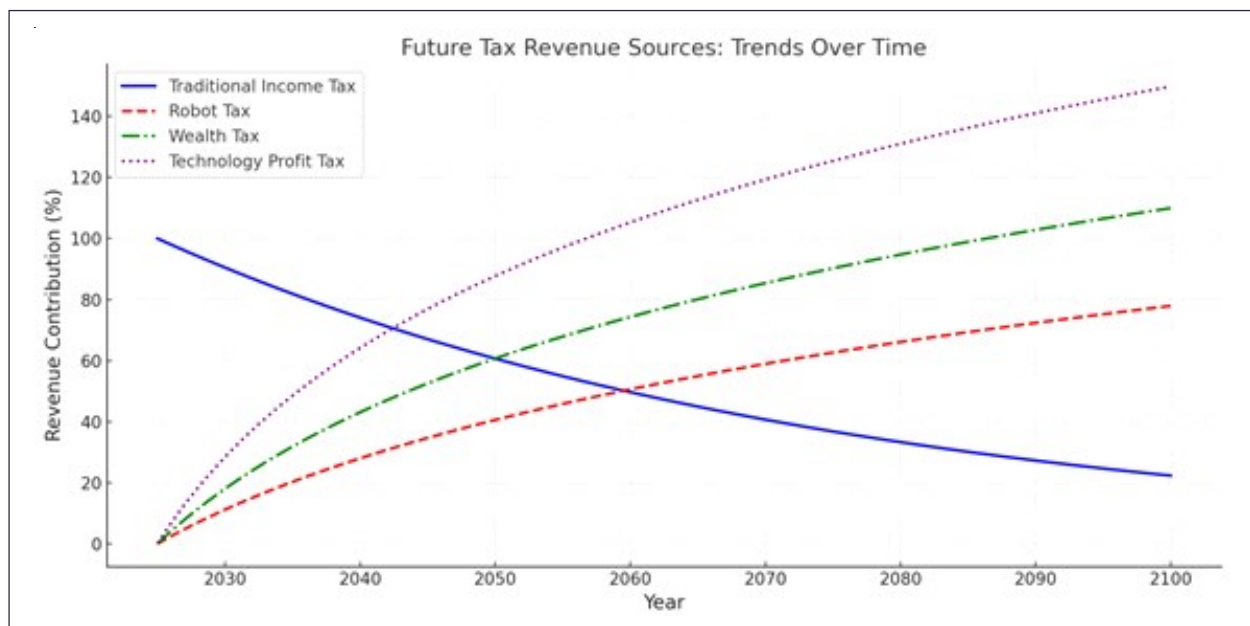


Figure 2: Tax Revenue Landscape from 2025 to 2100

**Traditional Income Tax (Blue Line):** The declining trajectory indicates reduced reliance on conventional income tax revenue, likely due to automation diminishing human labor’s economic contribution.

**Robot Tax (Red Line):** Gradual growth reflects the increasing significance of taxing automated labor as robotics and AI systems dominate industries.

**Wealth Tax (Green Line):** This exhibits a steeper increase, suggesting a growing emphasis on redistributive mechanisms to address inequality in wealth accumulation.

**Technology Profit Tax (Purple Line):** The most pronounced growth trend aligns with the explosive profitability of tech enterprises as AGI and ASI become central to the economy.

The convergence of these lines toward a balanced system implies a diversified tax strategy aimed at sustainably funding initiatives like UBI while avoiding overdependence on any single sector.

This envisioned future underscores the need for proactive tax policy reform to ensure that the benefits of advanced AI technologies are broadly shared, and that the tax system remains equitable and sustainable in the face of rapid technological change.

## 10. Conclusion

China's tax reform is pivotal for fostering social civilization and aligning with the digital era's demands. The proposed reforms, from transitioning to direct taxes to embracing digital economy taxation, are essential for equity, efficiency, and sustainability. As AI and automation reshape the global landscape, China's tax system must adapt to ensure fair distribution of wealth and remain a catalyst for economic and social advancement. By implementing these reforms, China can lead in creating a tax system that is future-proof, promoting both innovation and inclusivity in the AI-driven economy.

## References

- Carpenter, R. and Campel, D. (2024). *Tax Transformation: Adopting AI to Drive Efficiencies*. Retrieved from *EY Tax and Finance Operations survey*.
- Haisheng, H., Wanhao, D. and Qian, Z. (2021). *A Comparative Study on the Environmental and Economic Effects of a Resource Tax and Carbon Tax in China: Analysis Based on the Computable General Equilibrium Model*. *Energy Policy*, 156, 112460. doi: <https://doi.org/10.1016/j.enpol.2021.112460>
- IBFD. (2021). *Taxing Artificial Intelligence and Robots: Critical Assessment of Potential Policy Solutions and Recommendation for Alternative Approaches*. Retrieved from IBFD.
- Li, S. and Lin, S. (2024). *Social Security Reforms, Capital Accumulation, and Welfare: A Notional Defined Contribution System vs a Modified PAYG System*. *J Popul Econ*, 37, 27. doi: <https://doi.org/10.1007/s00148-024-01004-z>
- Mengden, A. (2024). *International Tax Competitiveness Index 2024*. Retrieved from Tax Foundation.
- NPC. (2024). *Individual Income Tax Law of the People's Republic of China*. [www.npc.gov.cn](http://www.npc.gov.cn)
- OECD. (2024). *OECD Economic Outlook, Interim Report*.
- OECD. (2024). *Tax Policy Reforms 2024*.
- PwC. (2013). *Shifting the balance from direct to indirect taxes: bringing new challenges on Tax policy and administration - Global perspectives*. PwC official website.
- PwC. (2023). *PwC China's '2023 China Tax Policy Review and 2024 Outlook*. Retrieved from PwC
- Rida Belahouaoui and El Houssain Attak. (2024). *Digital taxation, artificial intelligence and Tax Administration 3.0: improving tax compliance behavior – a systematic literature review using textometry (2016–2023)*. *Accounting Research Journal*, 37(2), 172-191.
- Shalini Aggarwal. (2024). *The Role of Artificial Intelligence In Tax Administration And Compliance: A New Era of Digital Taxation*. *Educational Administration: Theory and Practice*, 30(1), 3831-3837. doi: <https://doi.org/10.53555/kuey.v30i1.7581>
- Tax Foundation. (2021). *Historical Federal Individual Income Tax Rates & Brackets, 1862-2021*.  
[Sino-U.S. Tax System and Tax Burden Comparison \(2023\)](https://www.taxfoundation.org/2021/08/11/historical-federal-individual-income-tax-rates-brackets-1862-2021/). Retrieved from Tencent News.
- York, E., Durante, A. and Muresianu, A. (2022). *Comparing the Corporate Tax Systems in the United States and China*. Retrieved from Tax Foundation. <https://taxfoundation.org/research/all-federal/us-china-competition-corporate-tax/>

**Cite this article as:** Bing Chen (2025). *The Imperative Need for Tax Reform in China and Its Impact on Advancing Social Civilization*. *International Journal of Management Research and Economics*, 5(1), 32-38. doi: [10.51483/IJMRE.4.2.2024.32-38](https://doi.org/10.51483/IJMRE.4.2.2024.32-38).